

Tile Light - Spotled

Using specific lens, the 1W Tile Light, is widely used in illuminating many historical building such as pavilions, temples.

Key Features:

- Uses OSRAM Golden DRAGON high luminous flux LED
- Uses specific lens to produce 12° or 30° beam
- 100-240VAC power supply
- Integral 350mA constant current source
- IP65 rating



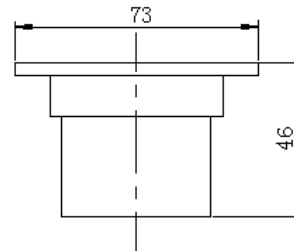
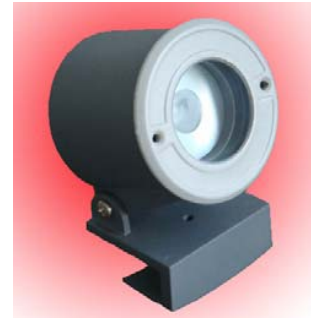
Materials:

Body : Aluminum, dark grey paint

Bracket: Aluminum, dark grey paint

Light Source:

OSRAM GOLDEN DRAGON



Installation:

100-240VAC input , 3x1mm² rubber coated wire , 0.5m of reserve line will be connected outside the light for connection purposes.

Ordering Guide

Part No.	LED	Description	Product code
SPOTLED GD-W 1W	OSRAM LW W5SM	Tile spot light, 1W, white color, AC input, IP65	10138101
SPOTLED GD-R 1W	OSRAM LR W5SM	Tile spot light, 1W, red color, AC input, IP65	10138102
SPOTLED GD-Y 1W	OSRAM LY W5SM	Tile spot light, 1W, yellow color, AC input, IP65	10138103
SPOTLED GD-B 1W	OSRAM LB W5SM	Tile spot light, 1W, blue color, AC input, IP65	10138104
SPOTLED GD-G 1W	OSRAM LT W5SM	Tile spot light, 1W, green color, AC input, IP65	10138105